

NEWSTEAD SENIOR & RECREATION CENTER

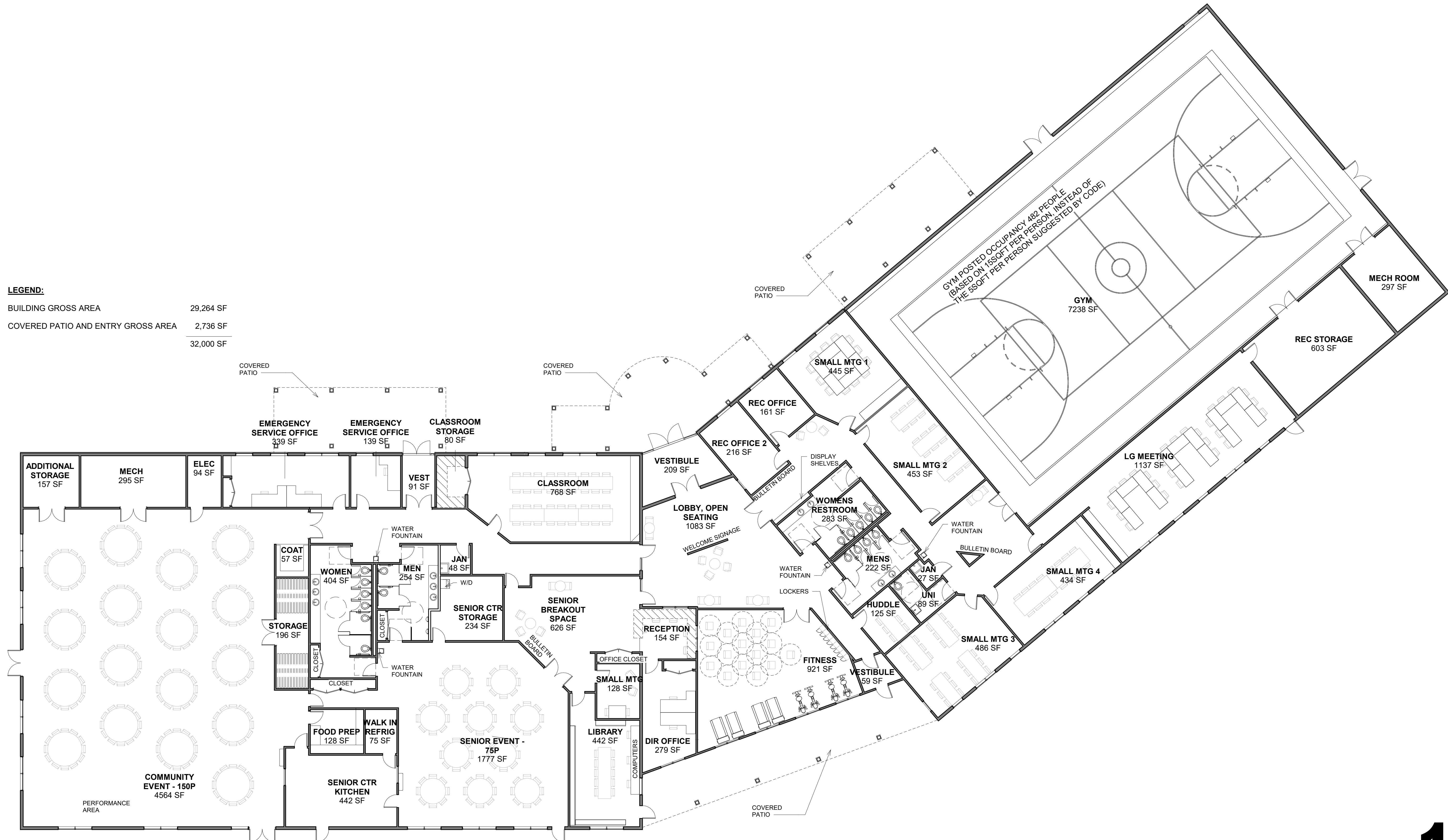
CONCEPTUAL SITE PLAN IMPROVEMENTS



1. Main Entrance from Buell Street
2. Main Entrance Signage facing Buell Street
3. Delivery Driveway
4. Delivery Driveway Turnaround
5. Main Vehicular Entrance (one way)
6. Site Entrance signage facing Veterans Park Road
7. Alternative Stormwater Management Location
8. Potential Sidewalk Extension
9. Potential Parking Area Expansion
10. Main Vehicular Exit (one way)
11. Vehicular Dropoff at Building Entry
12. Front Patio
13. Mounted Flagpoles
14. Walking Pathways (natural surface opt.)
15. Stormwater Management Area
16. Back Patio (with vegetated buffer garden)
17. Main Entrance Landing (area for chairs)
18. Vegetated Berm (wind control)

LEGEND:

BUILDING GROSS AREA	29,264 SF
COVERED PATIO AND ENTRY GROSS AREA	2,736 SF
	<u>32,000 SF</u>



1 NEWSTEAD COMMUNITY CENTER
3/32" = 1'-0"

10/8/24



1
OPTION

TOWN OF NEWSTEAD

5929 Buell St, Akron, NY 14001

TOWN OF NEWSTEAD COMMUNITY CENTER

PROJ # 225372



www.wendelcompanies.com



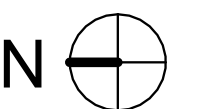
* For detailed planting and parking locations please reference rendered site plan

TOWN OF NEWSTEAD
5929 Buell St, Akron, NY 14001

TOWN OF NEWSTEAD COMMUNITY CENTER

PROJ # 225372

3/26/24



1

OPTION



www.wendelcompanies.com



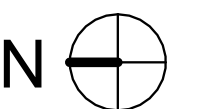
* For detailed planting and parking locations please reference rendered site plan

TOWN OF NEWSTEAD
5929 Buell St, Akron, NY 14001

TOWN OF NEWSTEAD COMMUNITY CENTER

PROJ # 225372

3/26/24



1
OPTION





* For detailed planting and parking locations please reference rendered site plan

TOWN OF NEWSTEAD
5929 Buell St, Akron, NY 14001

TOWN OF NEWSTEAD COMMUNITY CENTER

PROJ # 225372

3/26/24



1
OPTION

