

PK0822 LED Light Pole Kit with Two LED Area Lights, Selectable Wattage: 185/240/300 & Color Temperature, 20-30 Foot Pole Height Options

Commercial grade LED Light Pole Assembly Includes:
 Seven Area Light poles, 2 LED lights complete with mounting brackets and hardware, and anchor bolts and base cover.

Light Pole:
 Pole: Commercial grade steel with minimum yield strength of 50,000 psi.
 20' poles: 4" square x 1/2" wall; 25' poles: 4" square x 3/8" wall; 30' poles: 4" square x 1/2" wall.
 Pole height: Standard pole height is 20'. Optional heights are 25' and 30'.
 Custom heights are also available.
 Anchor bolts: 1/2" diameter steel anchor bolts are provided.
 Each anchor bolt includes 2 nuts and 2 washers.
 Bolt Code: 1/2" Hex 307 Steel Cold Churn (Stem) base for 12" Bolt Circle.
 3/4" Hex 307 Steel Cold Churn base for 15", 17", 20", 25", 30" Bolt Circle.
 Handhole: Handhole is located 17" above the base plate for 20' and 25' pole; 22" above the base plate for 30' pole. A 1/2" x 3/4" handhole cover is included.
 Color: Dark Bronze.
 Base Cover: 18" Dia. Steel base cover with nuts.

LED Fixture:
 Material: Aluminum construction with integrated heat management heat dissipator.
 Color: Dark Bronze.
 Power Factor: 0.95.
 Voltage: 120/277V AC.
 Power Color Temperature: 3000K.
 Light Distribution: Type I standard.
 Type I and Type II options in special order.
 Photometric: Photometric in optional.
 Dimming: 0-100% Dimming Capable.
 Dimming control: provided through remote.
 ETL Listing: ETL listed for wet locations.
 DCC Listing: DCC Premium.
 Weight: 55 lbs. (per fixture).

LED Fixture Dimensions:

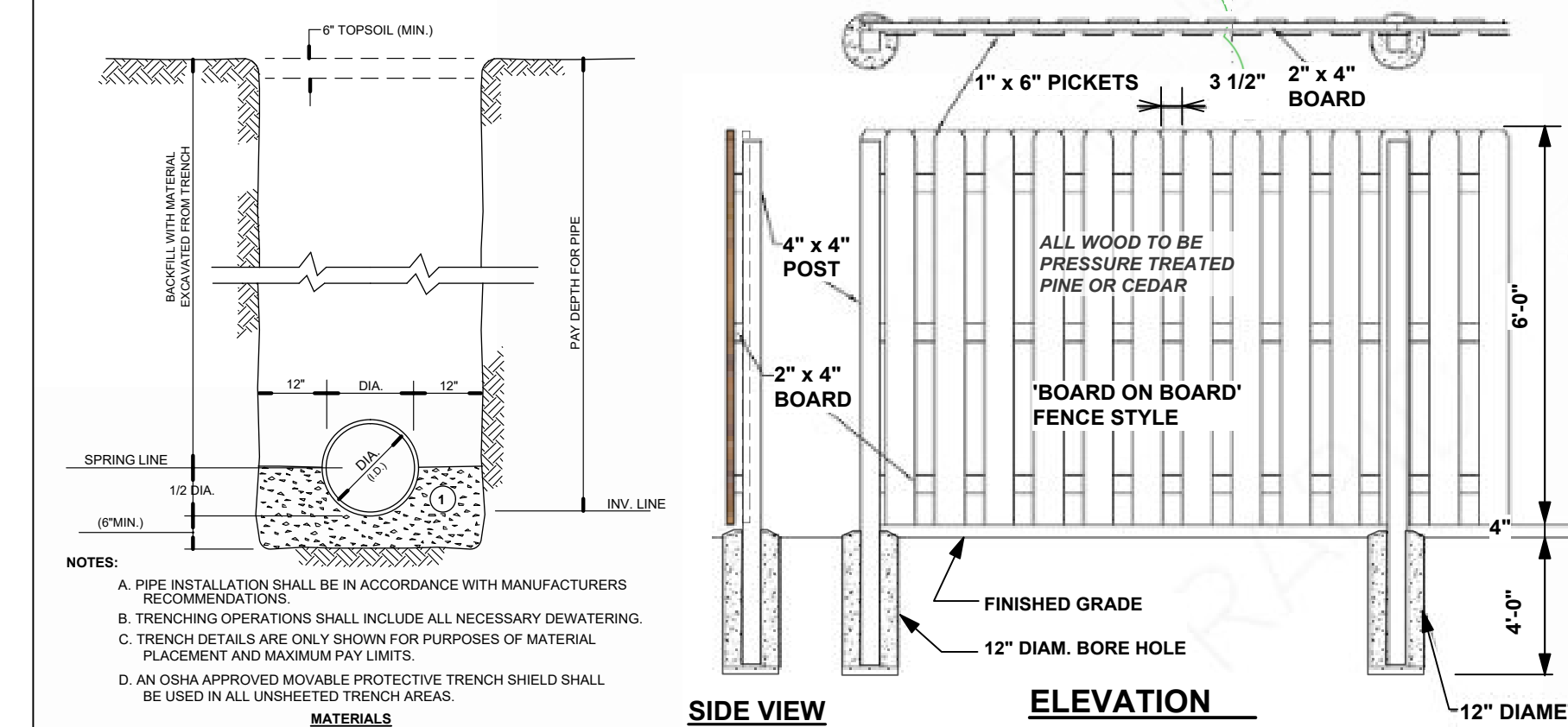
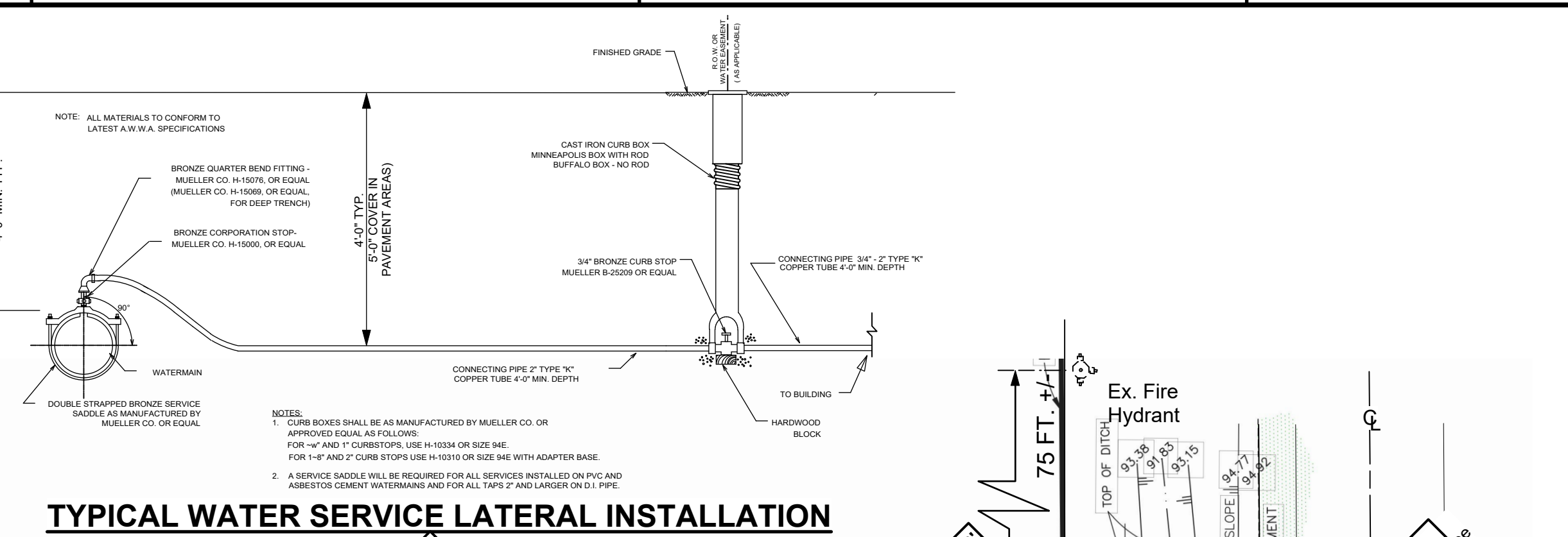
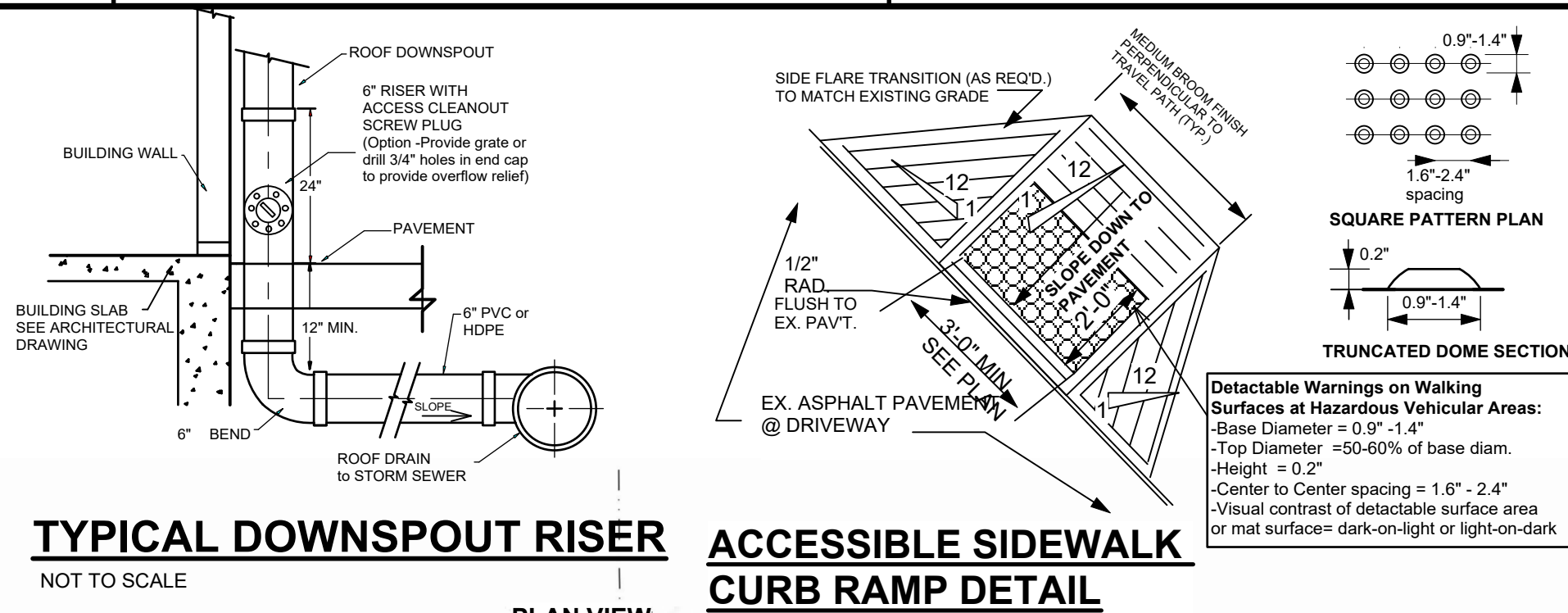
Base Plate Dia.	Set Dia.	Set H.
18"	18"	12"
20"	20"	12"
25"	25"	12"
30"	30"	12"

Base Plate Dimensions:

Base Plate Dia.	Set Dia.	Set H.
18"	18"	12"
20"	20"	12"
25"	25"	12"
30"	30"	12"

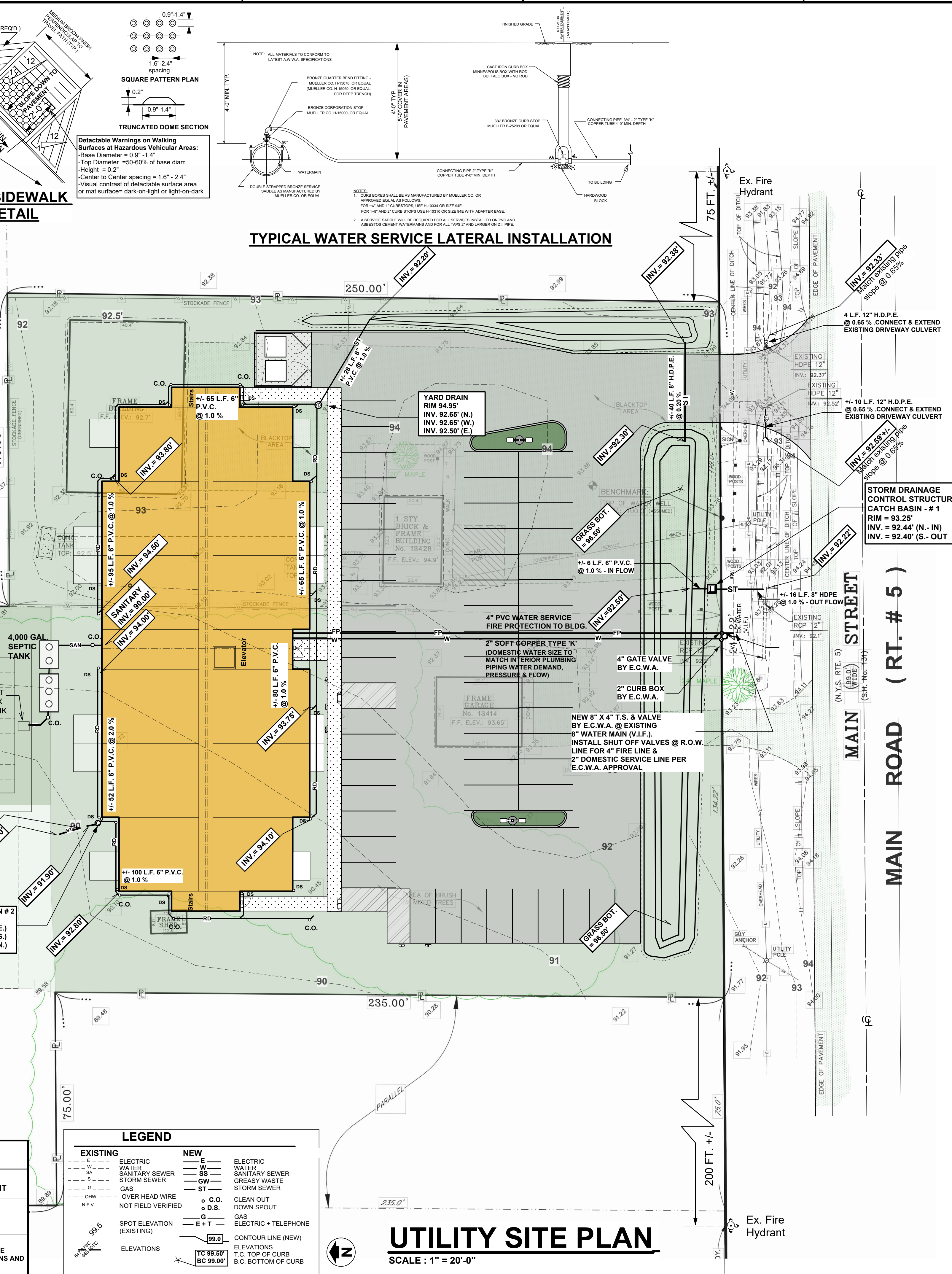
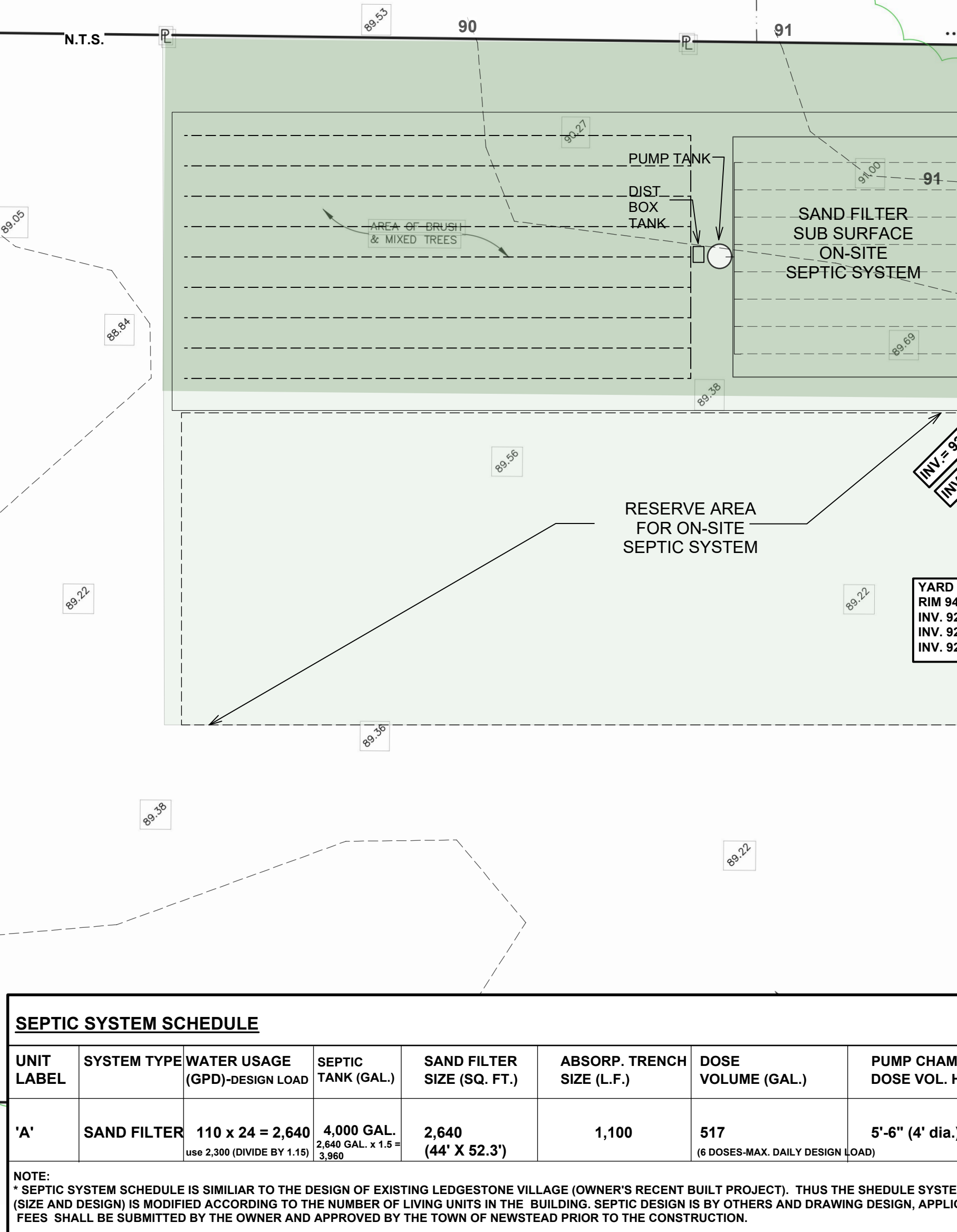
Copyright © 2023 Energy Light, Inc. All Rights Reserved 11881 Rose Road, Lake Zurich, IL 60047

LIGHT POLE & LED FIXTURE DETAIL
N.T.S.



STORM SEWER TRENCH
N.T.S.

SCREEN FENCE DETAIL
N.T.S.



SEPTIC SYSTEM SCHEDULE

UNIT LABEL	SYSTEM TYPE	WATER USAGE (GPD)-DESIGN LOAD	SEPTIC TANK (GAL.)	SAND FILTER SIZE (SQ. FT.)	ABSORP. TRENCH SIZE (L.F.)	DOSE VOLUME (GAL.)	PUMP CHAMBER DOSE VOL. HEIGHT
'A'	SAND FILTER	110 x 24 = 2,640 Use 2,300 (WIDE BY 1.15)	4,000 GAL. 2,640 GAL. x 1.5 = 3,960	2,640 (44' X 52.3')	1,100	517 (6 DOSES-MAX. DAILY DESIGN LOAD)	5'-6" (4' dia.)

NOTE: SEPTIC SYSTEM SCHEDULE IS SIMILAR TO THE DESIGN OF EXISTING LEDGESTONE VILLAGE (OWNER'S RECENT BUILT PROJECT). THIS THE SCHEDULE SYSTEM TYPE (SIZE AND DESIGN) IS MODIFIED ACCORDING TO THE NUMBER OF LIVING UNITS IN THE BUILDING. SEPTIC DESIGN IS BY OTHERS AND DRAWING DESIGN, APPLICATIONS AND FEES SHALL BE SUBMITTED BY THE OWNER AND APPROVED BY THE TOWN OF NEWSTEAD PRIOR TO THE CONSTRUCTION.

REVISIONS

#	DATE	DESCRIPTION
1	9-20-24	REVISIONS PER SITE PLAN APPLICATION REVIEW COMMENTS DATED 9-4-2024

UTILITY PLAN C - 103

JOB NO. 2024-027

DE L resource
 Thomas H. Shelberg, R.A. am ASCE
 Architect - Site Consultant
 183 Bathurst Drive
 Buffalo, New York, 14203
 716.883.4454
 delresource@verizon.net
 www.delresource.com

LJ Construction
 lj.construction@outlook.com

ISSUED BY: THOMAS H. SHELBERG, R.A. am ASCE.
 ANDREW V. TERRANOLI, P.E.

PERMIT SET (SITE PLAN) BID SET PROGRESS NOT FOR CONSTRUCTION DOCUMENT STATUS: FINAL FOR CONSTRUCTION

DATE: 30 SEPT. 2024